

Alaska Department of Fish and Game

Habitat Section
Southeast Region



191-20-13800-2016 Tributary 3

ADDITION

Water body name:

Survey date: 7/25/2024

Quad: Icy Bay D2, D3

Species & Lifestage:

Upper Reach Latitude: 59.976909 **Longitude:** -141.643307

Survey crew: NJ, DK, CD

Lower Reach Latitude: 59.977059 **Longitude:** -141.639312

Findings: We surveyed this uncataloged stream baited minnow traps and GPS and captured juvenile coho salmon. This stream has ponded water on both sides of the old logging road. Coho caught below the road but not above. Another trap was set in an adjacent but disconnected pond at waypoint 768; may connect during high water (Table 1; Figures 1–3).

Recommendations: Add this uncataloged stream to the anadromous waters catalog for rearing coho salmon up to waypoint 759 (Figure 4).

Nomination: Pending

Table 1.–191-20-13800-2016 tributary 3 survey data.

Waypoint	Latitude	Longitude	Notes	Stream Width ft	Stream Substrate	Habitat Features	Gradient %	Sample Effort	Sample Results
759	59.976923	-141.643371	Ponded water on either side of the road setting minnow trap on downstream side. Road built on top of connection, but may connect at high water. Coho caught below road, resetting minnow trap above the road crossing.					MT	4 CO
768	59.976872	-141.643479						MT	No Fish



Figure 1.–Coho salmon caught at waypoint 759.



Figure 2.—Ponded water below the road at waypoint 759.



Figure 3.—Ponded water above the road at waypoint 759.

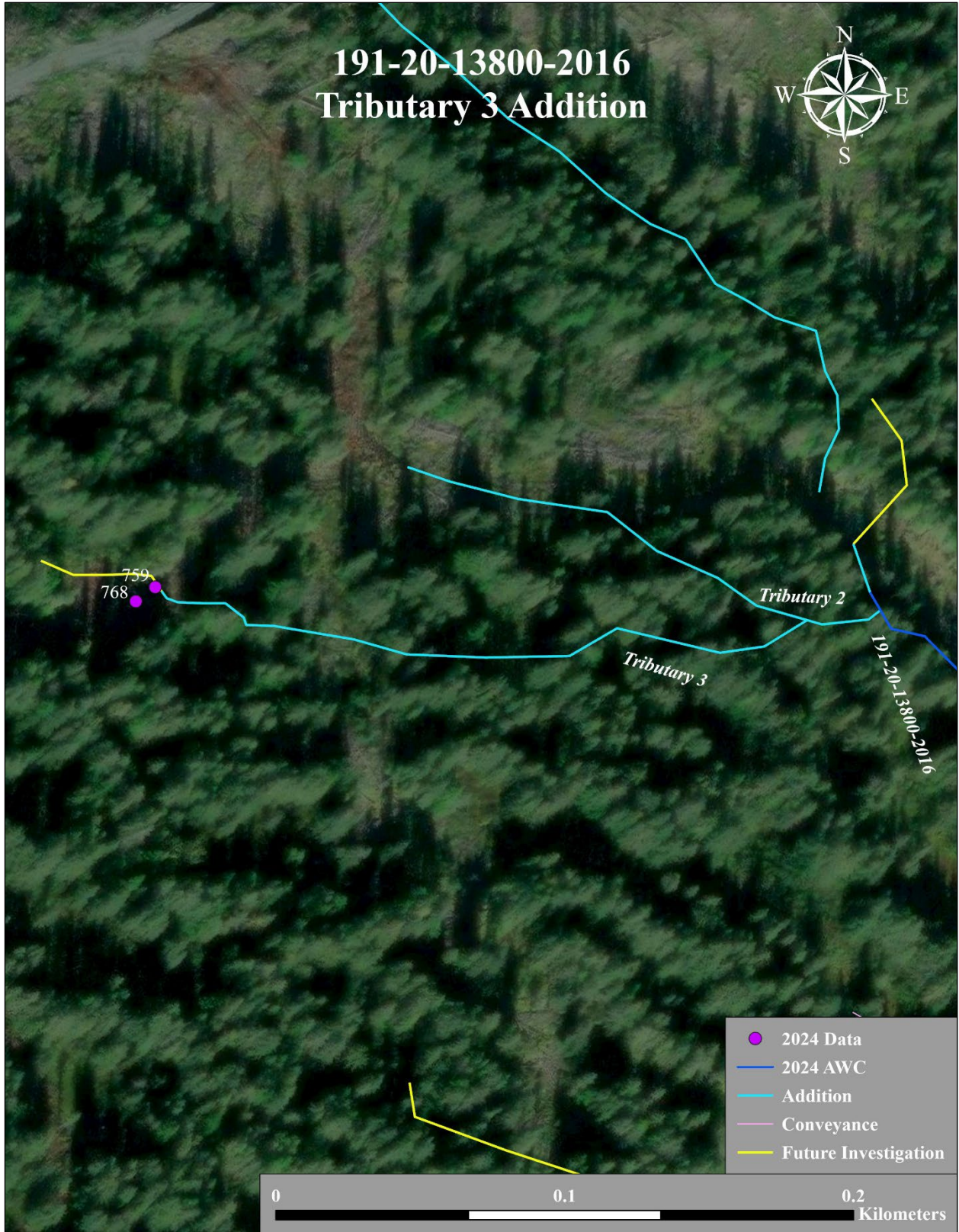


Figure 4.—191-20-13800-2016 tributary 3 addition map.